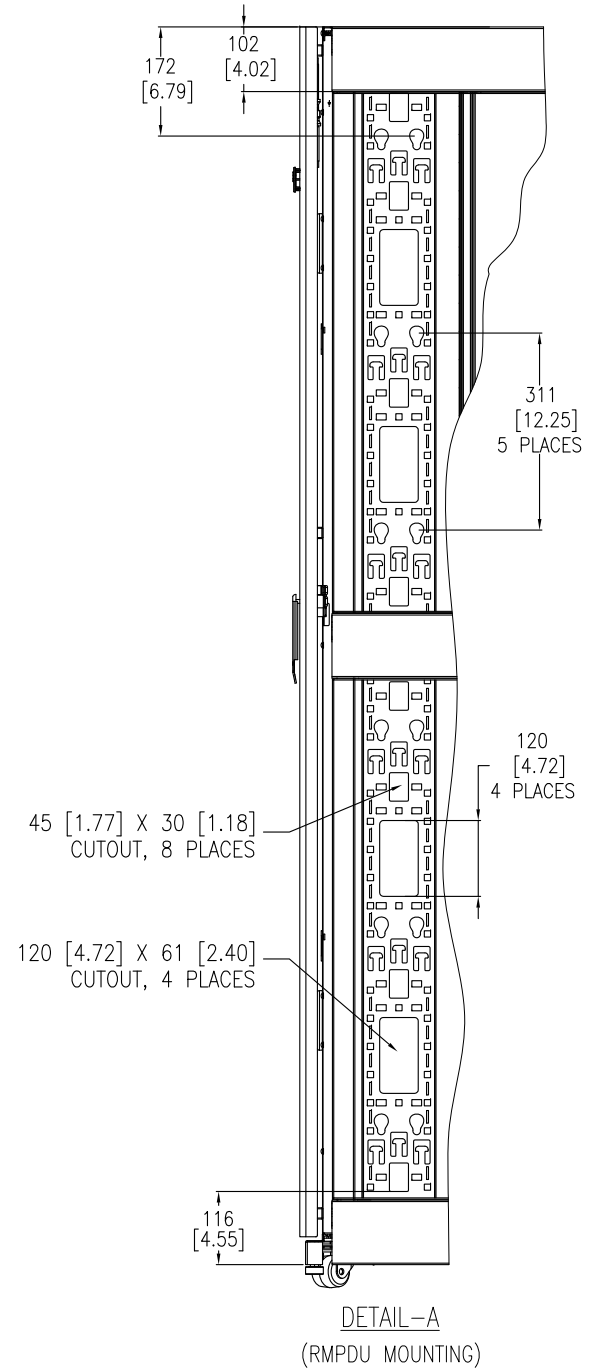


NOTES:

1. INSTALLATION MUST COMPLY WITH NATIONAL AND LOCAL ELECTRICAL REGULATIONS.
2. PLEASE REFER TO THE PRODUCT MANUALS FOR DETAILED INFORMATION.
3. ALL DIMENSIONS ARE IN MILLIMETERS [INCHES].
4. NET WEIGHT OF UNIT IS 156.0 Kg [343 LBS].
5. CABLE ENTRY IS TOP OR BOTTOM OF UNIT.
6. FRONT AND REAR SERVICE ACCESS REQUIRED.
7. AIR FLOW AND SERVICE REQUIREMENTS, AS WELL AS MINIMUM CLEARANCE TO FIRE SUPPRESSION SYSTEMS SHOULD BE CONSIDERED WHEN LOCATING THE ENCLOSURE.



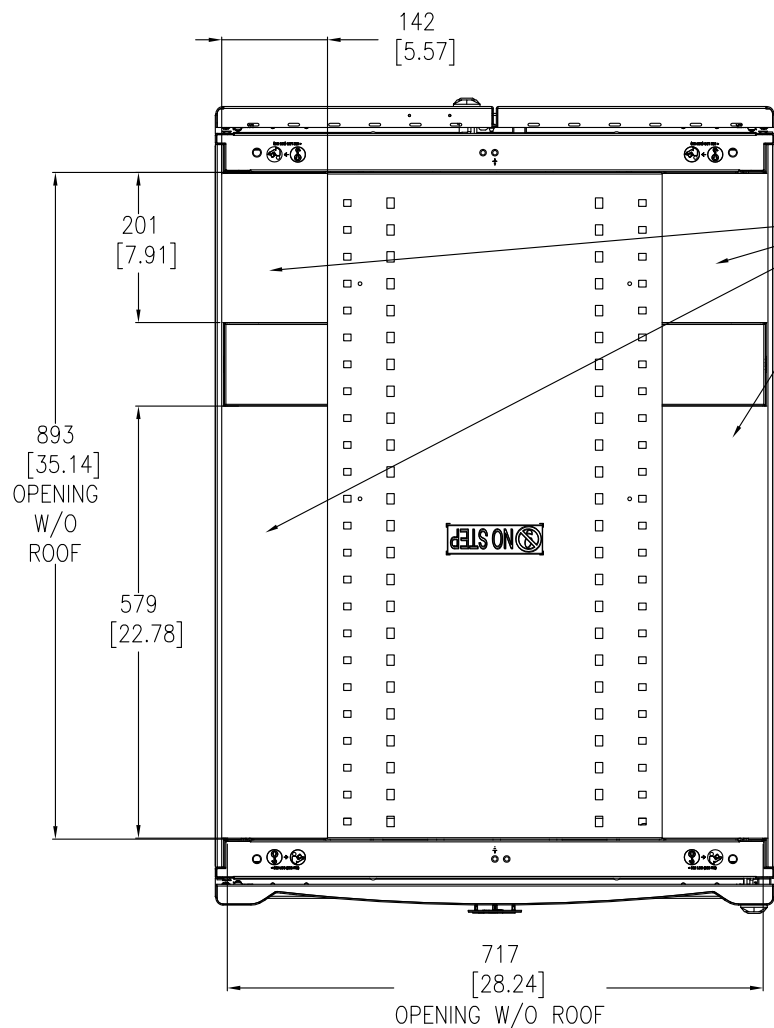
THIS DRAWING AND SPECIFICATIONS HEREIN ARE THE PROPERTY OF SCHNEIDER ELECTRIC AND SHALL NOT BE COPIED, REPRODUCED OR USED IN WHOLE OR IN PART, AS THE BASIS FOR THE MANUFACTURE OR SALE OF ITEMS WITHOUT WRITTEN PERMISSION FROM SCHNEIDER ELECTRIC. THIS DRAWING IS BASED UPON LATEST AVAILABLE INFORMATION AND IS SUBJECT TO CHANGE WITHOUT NOTICE.

Schneider
Electric

TITLE: NetShelter SX 42U
NETWORKING ENCLOSURE WITH SIDES
750mm WIDE x 1070mm DEEP
MAIN MECHANICAL

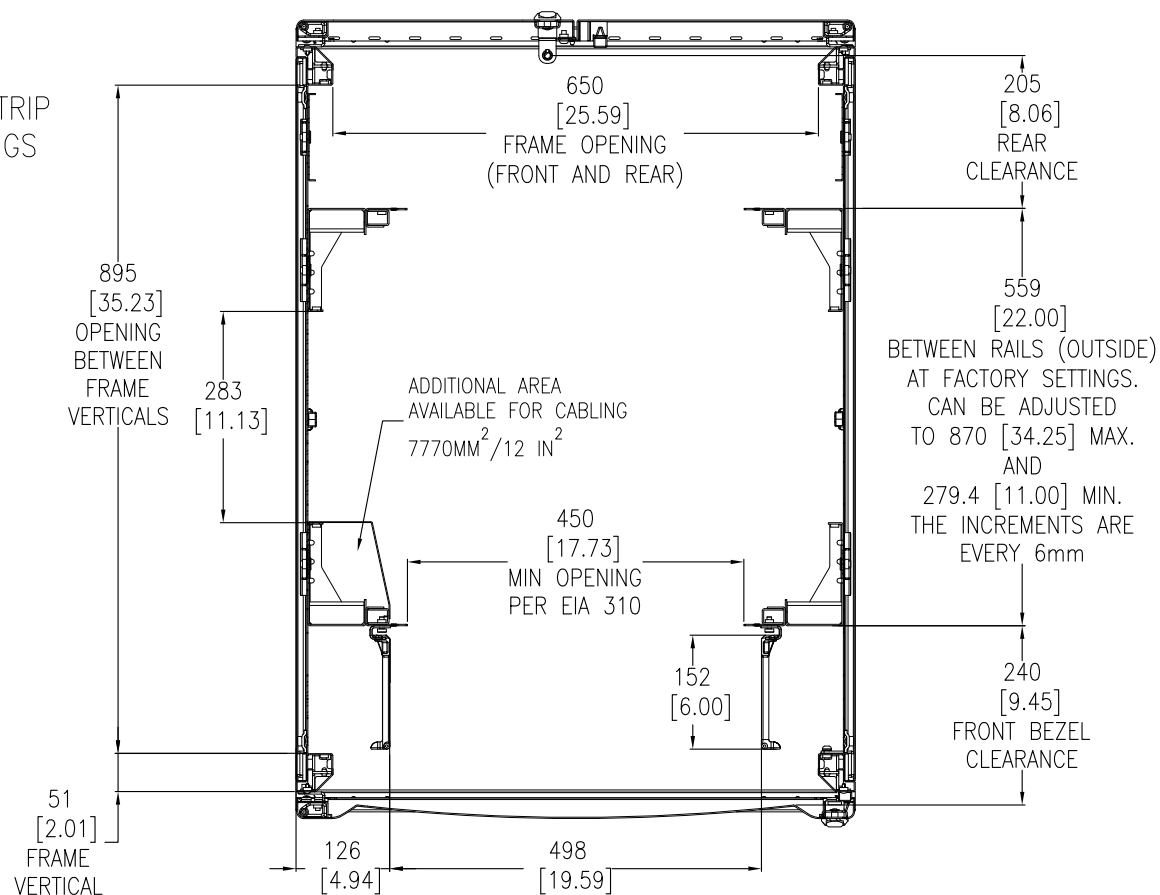
DWG NO: AR3140
DRAWN BY: C KRISHNA 16-DEC-09
ENGINEER: K THOMAS/J.KUMMER 16-DEC-09
APPROVED BY: S. SREEDHAR 16-DEC-09
PROJECT: SUBMITTAL DRAWINGS SHEET 1 OF 3

REV. 0
FIRST
ANGLE
PROJECTION



TOP VIEW
CABLE OPENINGS
(COVERS REMOVED)

BRUSH STRIP
4 OPENINGS



SECTION B-B
(VIEW FROM INSIDE CABINET
LOOKING DOWN)

NOTES:

1. INSTALLATION MUST COMPLY WITH NATIONAL AND LOCAL ELECTRICAL REGULATIONS.
2. PLEASE REFER TO PRODUCT MANUALS FOR ADDITIONAL DETAILS
3. ALL DIMENSIONS ARE IN MILLIMETERS [INCHES].

THIS DRAWING AND SPECIFICATIONS HEREIN ARE THE PROPERTY OF SCHNEIDER ELECTRIC AND SHALL NOT BE COPIED, REPRODUCED OR USED IN WHOLE OR IN PART, AS THE BASIS FOR THE MANUFACTURE OR SALE OF ITEMS WITHOUT WRITTEN PERMISSION FROM SCHNEIDER ELECTRIC. THIS DRAWING IS BASED UPON LATEST AVAILABLE INFORMATION AND IS SUBJECT TO CHANGE WITHOUT NOTICE.

Schneider
Electric

TITLE:
NetShelter SX 42U
NETWORKING ENCLOSURE WITH SIDES
750mm WIDE x 1070mm DEEP
TOP VIEWS

PROJECT: SUBMITTAL DRAWINGS SHEET 2 OF 3

DWG NO: AR3140

DRAWN BY: C KRISHNA/S CUNHA 13-MAR-12

ENGINEER: K THOMAS/J KUMMER 13-MAR-12

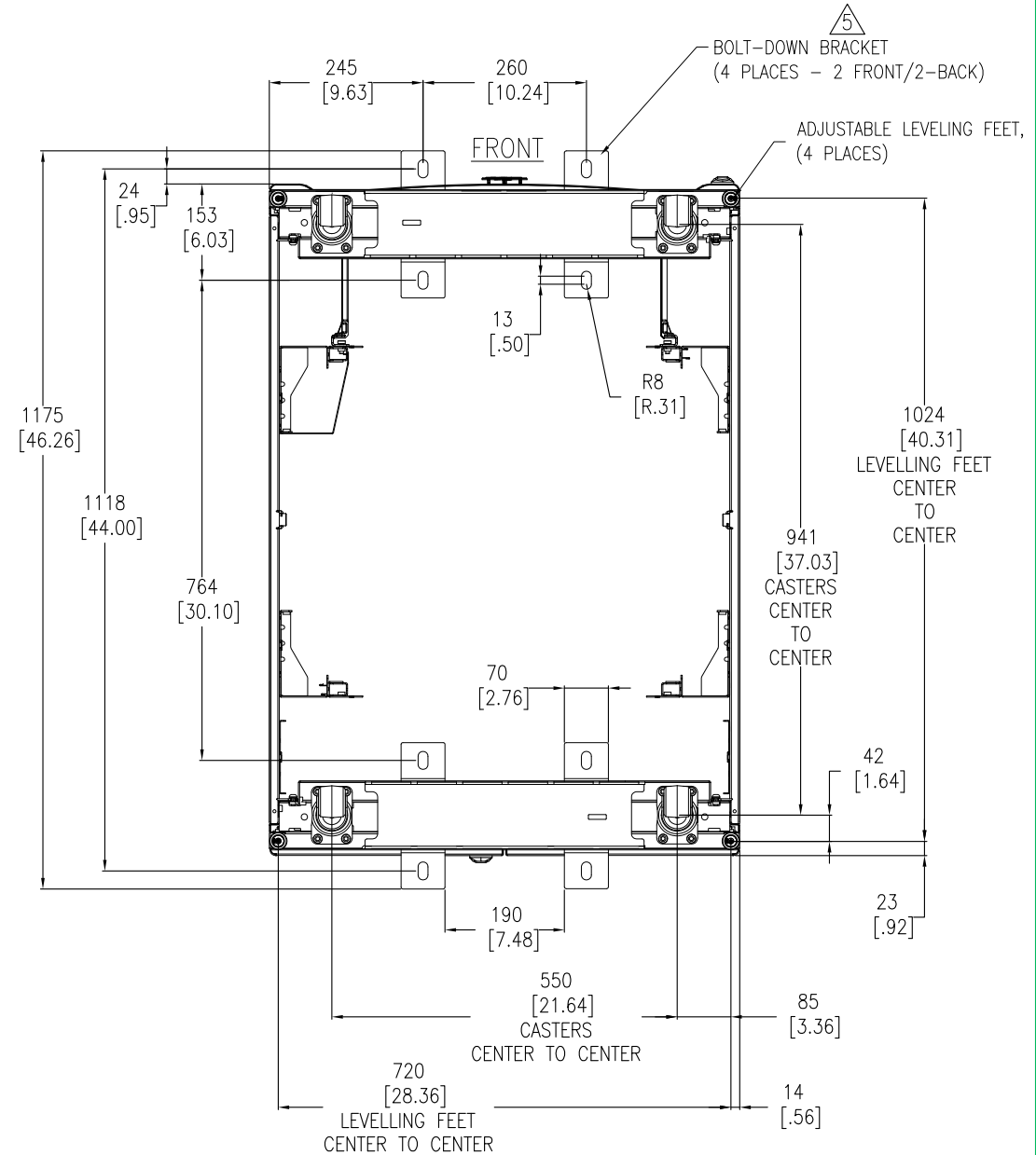
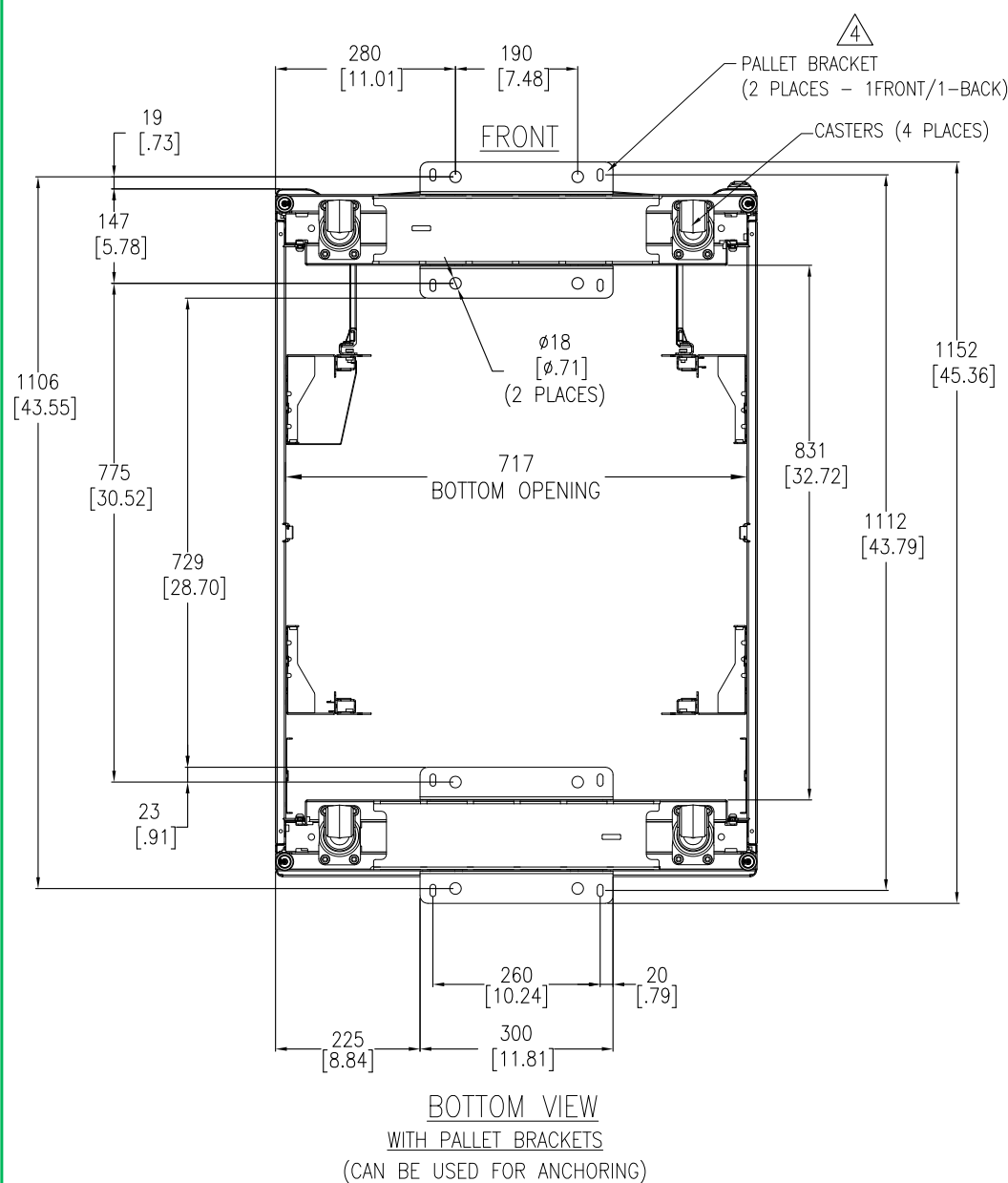
APPROVED BY: S VOCCIO/C LARSEN 13-MAR-12

REV. 1

FIRST

ANGLE

PROJECTION



NOTES:

1. INSTALLATION MUST COMPLY WITH NATIONAL AND LOCAL ELECTRICAL REGULATIONS.
2. PLEASE REFER TO PRODUCT MANUALS FOR ADDITIONAL DETAILS
3. ALL DIMENSIONS ARE IN MILLIMETERS [INCHES].

△4. ANCHORING CAN BE INSTALLED EITHER INSIDE OR OUTSIDE THE NetShelter WITH ONE AT FRONT AND ONE IN BACK.

△5. BOLT-DOWN KIT (SKU# AR7701) IS OPTIONAL AND HAS TO BE ORDERED SEPERATELY.

THIS DRAWING AND SPECIFICATIONS HEREIN ARE THE PROPERTY OF SCHNEIDER ELECTRIC AND SHALL NOT BE COPIED, REPRODUCED OR USED IN WHOLE OR IN PART, AS THE BASIS FOR THE MANUFACTURE OR SALE OF ITEMS WITHOUT WRITTEN PERMISSION FROM SCHNEIDER ELECTRIC. THIS DRAWING IS BASED UPON LATEST AVAILABLE INFORMATION AND IS SUBJECT TO CHANGE WITHOUT NOTICE.

Schneider
Electric

TITLE: NetShelter SX 42U
NETWORKING ENCLOSURE WITH SIDES
750mm WIDE x 1070mm DEEP
BOTTOM VIEW & ANCHORING DETAILS

PROJECT: SUBMITTAL DRAWINGS SHEET 3 OF 3

DWG NO: AR3140

DRAWN BY: JAYAPRAKASH/S CUNHA	30-NOV-12
ENGINEER: K THOMAS/J.KUMMER	28-JAN-11
APPROVED BY: B SREEDHAR/ANAND/LAKSHY/S MHA	28-JAN-11

REV. 2

FIRST
ANGLE
PROJECTION