

WPL200-12N 12Volt 200Ah

Specifications

Nominal Voltage(V) **12V**

Nominal Capacity

| | |
|------------------------------|--------------|
| 10 hour rate (20A to 10.80V) | 200Ah |
| 5 hour rate (34A to 10.20V) | 170Ah |
| 1 hour rate (120A to 9.60V) | 120Ah |

Weight **Approx. 68.5kg(151Lbs.)**

Internal Resistance (at 1KHz) **Approx. 3.5 mΩ**

Maximum Discharge Current for

5 seconds: **1600A**

Charging Methods at 25 (77)

Cycle use:

Charging Voltage **14.4 to 15.0V**

Coefficient -5.0mv/ /cell

Maximum Charging Current : **60A**

Standby use:

Float Charging Voltage **13.50 to 13.80V**

Coefficient -3.0mv/ /cell

Operating Temperature Range

Charge **-15 (5) to 40 (104)**

Discharge **-15 (5) to 50 (122)**

Storage **-15 (5) to 40 (104)**

Design Life **12 years**

Charge Retention (shelf life) at 20 (68)

1 month **98%**

3 month **94%**

6 month **85%**

Case Material

ABS

(UL94-V0 flame retardant case / cover)

Terminal

F18

Description of torque value of hard ware for the terminals:

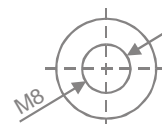
Recommended torque value **M8: 7.35 N-m (75kg-cm)**

Maximum allowable torque value **M8: 9.8 N-m (100kg-cm)**

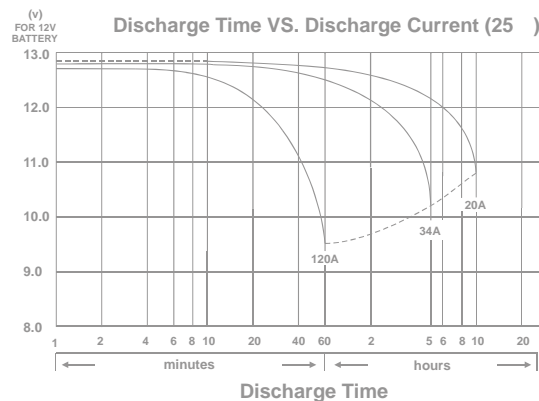
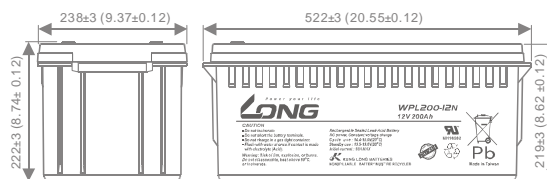
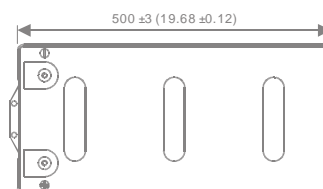


Dimensions

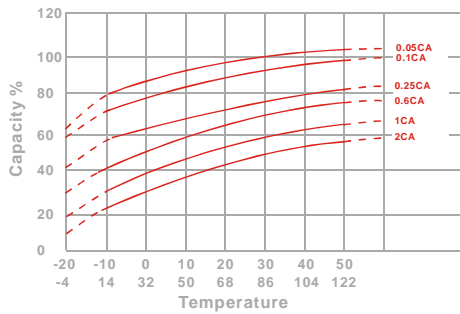
mm(inch)



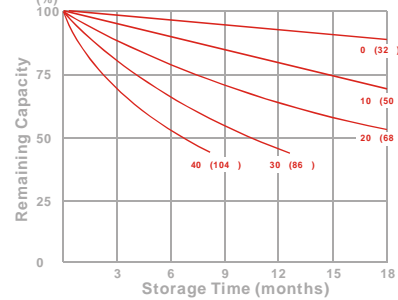
(M8 Bolt)
F18



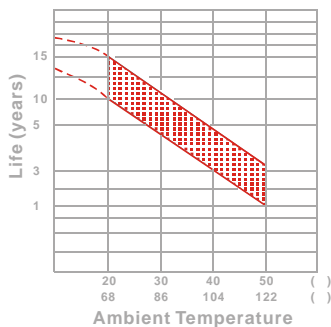
Effect of Temperature on Capacity 25 (77)



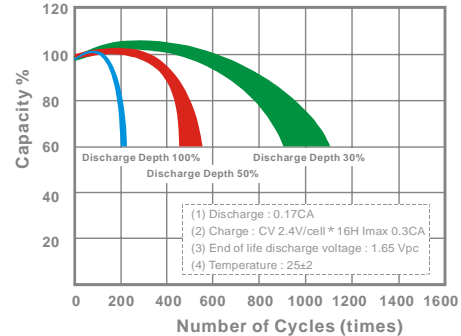
Capacity Retention Characteristic



Trickle (or float) Service Life



Cycle Service Life



- PERFORMANCE DATA

Discharge Rates in Watts to Various End Voltages at 25 (77)

| End Voltage | | 1.85V | 1.80V | 1.75V | 1.70V | 1.67V | 1.65V | 1.60V |
|-------------|-----|-------|-------|-------|-------|-------|-------|-------|
| Time | | | | | | | | |
| 10 | min | 3845 | 4238 | 4487 | 4714 | 4825 | 4948 | 5147 |
| 15 | min | 3209 | 3418 | 3610 | 3794 | 3871 | 3962 | 4119 |
| 30 | min | 2194 | 2331 | 2459 | 2576 | 2624 | 2686 | 2781 |
| 60 | min | 1322 | 1392 | 1451 | 1505 | 1523 | 1546 | 1583 |
| 120 | min | 689 | 752 | 793 | 827 | 842 | 859 | 881 |
| 180 | min | 552 | 591 | 621 | 648 | 655 | 663 | 674 |
| 240 | min | 483 | 511 | 532 | 546 | 551 | 557 | 565 |
| 300 | min | 423 | 446 | 458 | 465 | 468 | 472 | 477 |
| 600 | min | 226 | 237 | 244 | 248 | 250 | 252 | 255 |
| 1200 | min | 122 | 128 | 131 | 133 | 134 | 135 | 136 |

- Discharge Rates in Amperes to Various End Voltages at 25 (77)

| End Voltage | | 1.85V | 1.80V | 1.75V | 1.70V | 1.67V | 1.65V | 1.60V |
|-------------|-----|-------|-------|-------|-------|-------|-------|-------|
| Time | | | | | | | | |
| 10 | min | 339 | 387 | 427 | 458 | 469 | 484 | 507 |
| 15 | min | 292 | 334 | 361 | 385 | 394 | 405 | 419 |
| 30 | min | 210 | 229 | 244 | 258 | 262 | 268 | 276 |
| 60 | min | 128 | 134 | 143 | 150 | 153 | 157 | 162 |
| 120 | min | 66.7 | 72.0 | 75.9 | 79.1 | 80.2 | 81.6 | 83.5 |
| 180 | min | 48.7 | 52.3 | 54.7 | 57.0 | 57.8 | 58.7 | 60.4 |
| 240 | min | 37.9 | 41.1 | 43.2 | 44.9 | 45.5 | 46.2 | 47.6 |
| 300 | min | 31.7 | 34.1 | 35.9 | 37.1 | 37.6 | 38.2 | 39.2 |
| 600 | min | 19.8 | 20.2 | 20.4 | 20.6 | 20.7 | 20.8 | 20.9 |
| 1200 | min | 10.2 | 10.5 | 10.7 | 10.8 | 10.9 | 11.0 | 11.1 |

All data on the spec. sheet is an average value:

The tolerance range : X<6min(+15%~-15%), 6min X<10min(+12%~-12%), 10min X < 60min(+8%~-8%), X > 60min(+5%~-5%)

050613-1D